



Homed:In

18 Station Road, Southwater, RH13 9HQ



Beech Road

, Horsham, RH12 4NP

Offers Over £425,000



Beech Road



Description

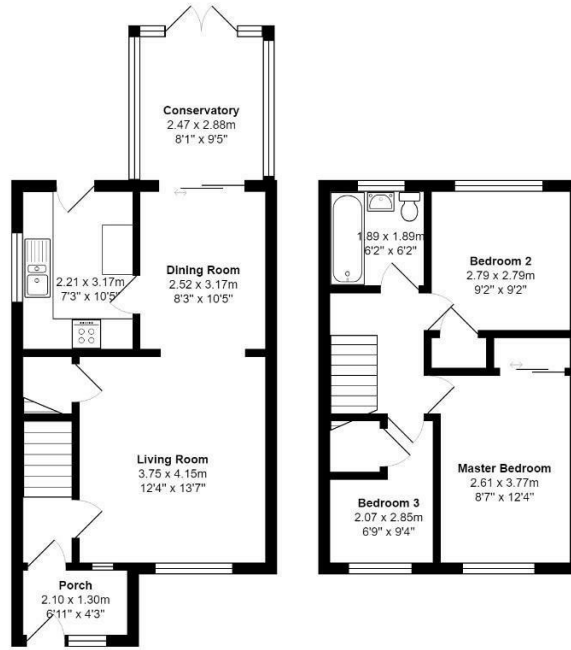
Watch the video of this well built and end of chain 3 bedroom home, approached by long driveway and with very large garage and conservatory extension.

- Well Positioned Family Home
- Very Big Garage and Long Drive
- END OF CHAIN
- Spacious Living and Dining Areas
- Recent Survey Carried Out
- Popular North Horsham close to Countryside
- Scope for Conversion/Extension
- Conservatory Extension
- Good Sized Master Bedroom
- VIDEO TOUR at our website





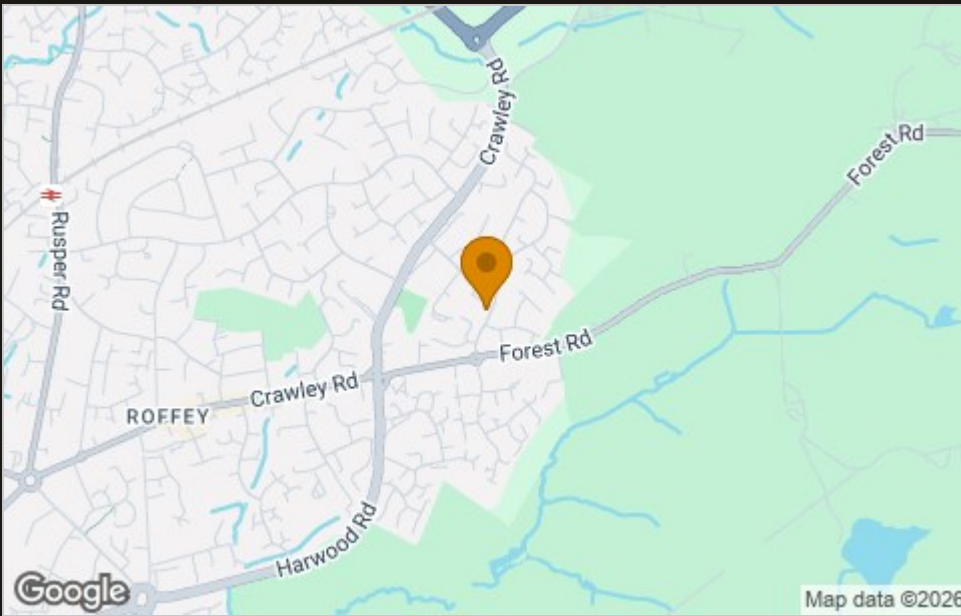
Floor Plan



Total Area: 83.6 m² ... 899 ft²

All measurements are approximate and for display purposes only.
Copyright 2022. Allrights reserved

Area Map



Viewing

Please contact our Horsham Office on 01403 597595 if you wish to arrange a viewing appointment for this property or require further information.

Energy Efficiency Graph

Energy Efficiency Rating		Current	Potential
Very energy efficient - lower running costs			
(92 plus) A			
(81-91) B			
(69-80) C			
(55-68) D			
(39-54) E			
(21-38) F			
(1-20) G			
Not energy efficient - higher running costs			
England & Wales		EU Directive 2002/91/EC	
Environmental Impact (CO ₂) Rating		Current	Potential
Very environmentally friendly - lower CO ₂ emissions			
(92 plus) A			
(81-91) B			
(69-80) C			
(55-68) D			
(39-54) E			
(21-38) F			
(1-20) G			
Not environmentally friendly - higher CO ₂ emissions			
England & Wales		EU Directive 2002/91/EC	

These particulars, whilst believed to be accurate are set out as a general outline only for guidance and do not constitute any part of an offer or contract. Intending purchasers should not rely on them as statements of representation of fact, but must satisfy themselves by inspection or otherwise as to their accuracy. No person in this firms employment has the authority to make or give any representation or warranty in respect of the property.

To **GET A FREE VALUATION** Call us on: **01403 597595**
or email us at: info@homedin.co.uk